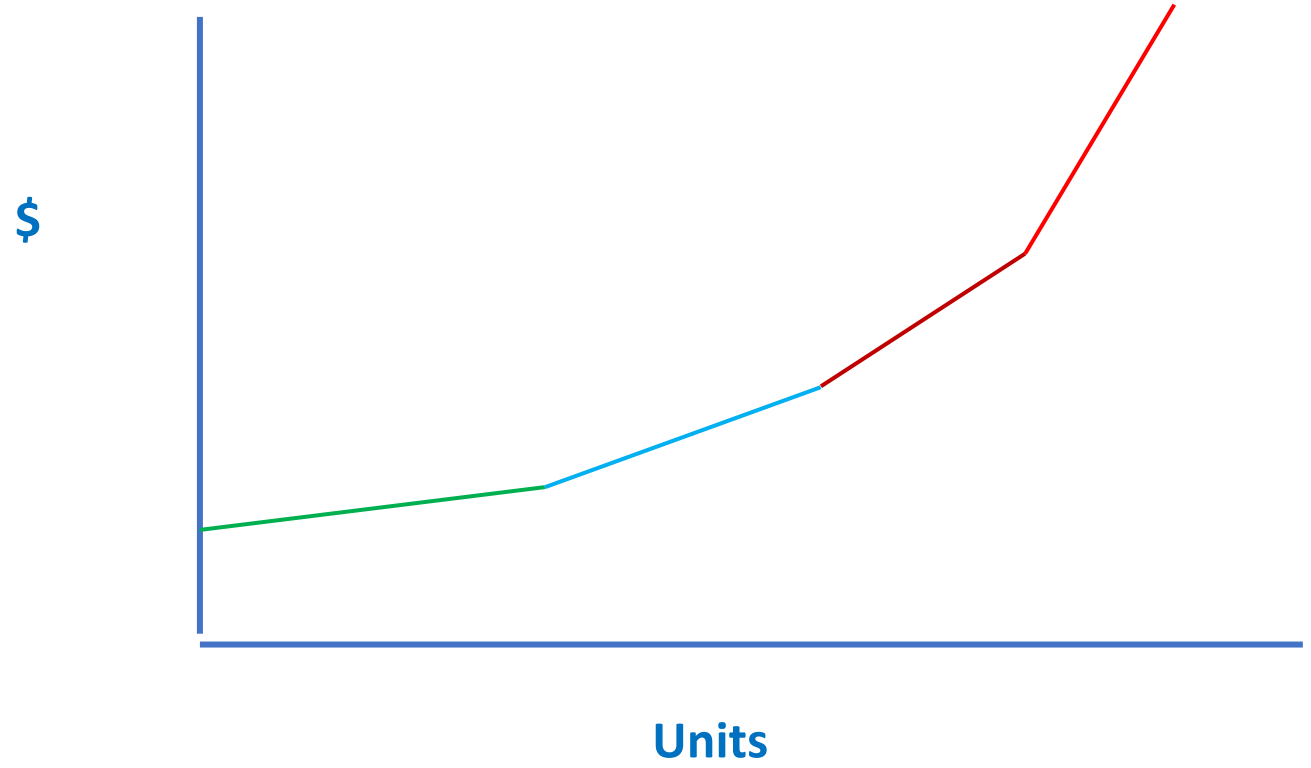


## Las Vegas Water District Billing Approximation

Based on built-in charges and amount of water consumed based upon a tiered system.

|                 |                     |
|-----------------|---------------------|
| Tier 1 – \$1.40 | $0 < x \leq 445$    |
| Tier 2 – \$2.50 | $445 < x \leq 890$  |
| Tier 3 – \$3.71 | $890 < x \leq 1335$ |
| Tier 4 – \$5.51 | $x > 1335$          |

For a lot of people, that might not register that the more they use, the higher the price per unit.



**Described Mathematically  
as a  
Piecewise Function**