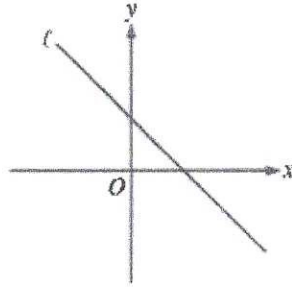


Praxis Review – Form 1

#16

Click on your choices.



The figure shows line l in the xy -plane. Line k (not shown) is perpendicular to line l . Which of the following statements could be true?

Indicate all such statements.

- The slope of line k is less than 0.
- The x-intercept of line k is less than 0.
- The y-intercept of line k is less than 0.

Praxis Review – Form 1

#17

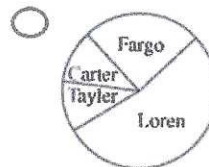
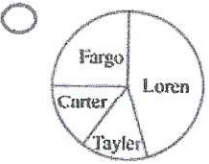
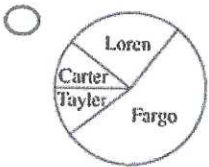
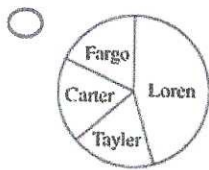
Time remaining - 1:07:00

Answer the question by clicking on the correct response.

TOTAL AREA OF JOHNSTON COUNTY, BY TOWNSHIP		
Township	Land Area (square miles)	Percent of Total
Fargo	46.6	25%
Loren	83.9	45%
Carter	28.1	15%
Taylor	27.9	15%
Total	186.5	100%

x

Which of the following circle graphs best represents the distribution of land area in Johnston County as shown in the table above?



Praxis Review – Form 1

#19

Answer the question by clicking on the correct response.

Set A consists of all integers that are prime numbers. Set B consists of all 2-digit positive integers that are less than 70 and have a units digit of 7. How many integers are members of both set A and set B ?

- 3
- 4
- 5
- 6

Praxis Review – Form 1

#18

Click on your choices.

Which of the following statements describe the graph of the function $3x - 4y = 12$ in the xy -coordinate plane?

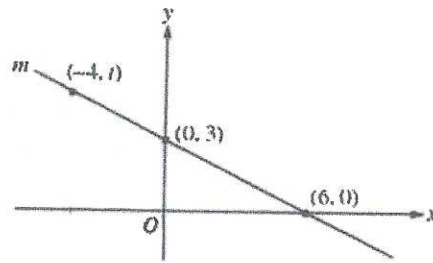
Select all that apply.

- The slope of the line is $-\frac{4}{3}$.
- The slope of the line is $\frac{3}{4}$.
- The x -intercept is 3.
- The x -intercept is 4.
- The y -intercept is -4 .
- The y -intercept is -3 .

Praxis Review – Form 1

#20

Answer the question by clicking on the correct response.



The point with coordinates $(-4, t)$ lies on line m in the xy -plane, as shown above. What is the value of t ?

- 4
- 5
- 9
- 14

Praxis Review – Form 1

#21

Click on the answer box and type in a number. Backspace to erase.

The sum of three consecutive integers is 19 less than four times the smallest integer. What is the value of the middle integer?

Praxis Review – Form 1

#22

Answer the question by clicking on the correct response.

Scores	Number of Students
100	1
90–99	4
80–89	7
70–79	6
60–69	5

The table shows the French midterm test scores of 23 students. Based on the information given, which of the following values can be determined?

- The lowest score
- The highest score
- The mean score
- The median score

Praxis Review – Form 1

#23

Answer the question by clicking on the correct response.

Which of the following is an equation of a line that is perpendicular to the line $y = 2x + 13$?

$y = -2x + 6$

$y = -\frac{1}{2}x + 3$

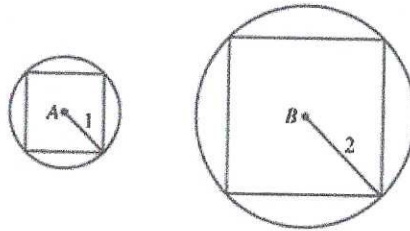
$y = \frac{1}{2}x + 3$

$y = 2x + 6$

Praxis Review – Form 1

#24

Answer the question by clicking on the correct response.



A square is inscribed in each of the circles above. The radius of circle A is 1, and the radius of circle B is 2. What is the ratio of the area of the square inscribed in circle A to the area of the square inscribed in circle B ?

- $1:\sqrt{2}$
- $1:2$
- $1:2\sqrt{2}$
- $1:4$

Praxis Review – Form 1

#25

Click on your choices.

\oplus	a	b
a	a	b
b	b	a

The table above defines an operation \oplus on the set $S = \{a, b\}$. Which of the following is true about S under the operation \oplus ?

Select **all** that apply.

- S is commutative.
- S is closed.
- There is an element of S that does not have an inverse.
- S contains an identity.

Praxis Review – Form 1

#26

Answer the question by clicking on the correct response.

Stem	Leaf
12	0, 2
13	1, 3, 3
14	2, 4, 5, 8
15	0, 1, 4, 7, 7, 9
16	2, 8, 8
17	1, 6, 9
18	0, 0, 4
19	5

Key: 13|1 = 131 pounds

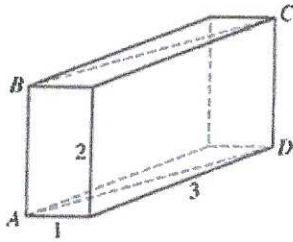
The weights, in pounds, of the 25 members of a fitness club are shown in the stem-and-leaf plot. What percent of the club members weigh less than 155 pounds?

- 36%
- 48%
- 52%
- 64%

Praxis Review – Form 1

#27

Answer the question by clicking on the correct response.



A rectangular solid with dimensions 1, 2, and 3 is shown above. What is the area of the cross section $ABCD$?

- $2\sqrt{10}$
- $2\sqrt{13}$
- $3\sqrt{5}$
- 8

V/D

Praxis Review – Form 1

#28

Answer the question by clicking on the correct response.

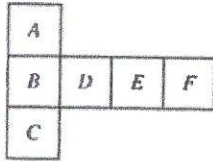
According to a survey of 100 students, 73 students took a math course and 57 took a music course. Of those surveyed, 22 reportedly took a math course but not a music course. How many students took neither a music course nor a math course?

- 6
- 21
- 30
- 51

Praxis Review – Form 1

#29

Answer the question by clicking on the correct response.



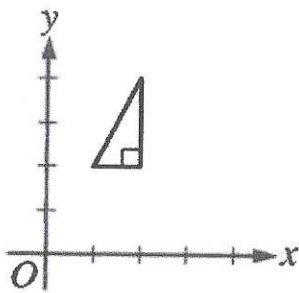
The 7-shaped figure above consists of six congruent squares. A coin will be placed randomly on one of the squares. It will then be moved randomly to a square that is adjacent to the square on which it was originally placed. What is the probability that after the coin has been moved, it will be on square E ? (Two squares are adjacent if they share a common side.)

- $\frac{1}{3}$
- $\frac{1}{4}$
- $\frac{1}{6}$
- $\frac{1}{12}$

Praxis Review – Form 1

#30

Answer the question by clicking on the correct response.



The triangle shown in the xy -plane is to be reflected about the y -axis and then reflected about the line $y = x$. Which of the following would be the result of the reflections?

