

Praxis Review - Form 3

#16

Answer the question below by clicking on the correct response.

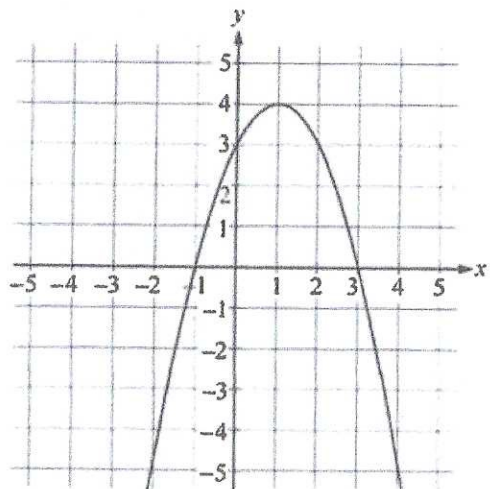
Andre has driven 98 miles, which is 35% of the total distance he must drive on his trip. How many more miles does Andre have to drive on his trip?

- 34
- 182
- 280
- 378

Praxis Review - Form 3

#17

Answer the question below by clicking on the correct response.



Which of the following is an equation of the graph shown in the xy -plane?

$y = x^2 - 4x + 1$

$y = (x - 1)^2 - 4$

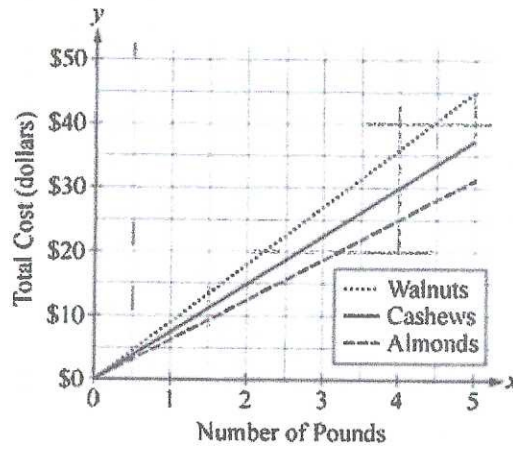
$y = -x^2 + 4x + 1$

$y = -(x - 1)^2 + 4$

Praxis Review - Form 3

#18

Click on your choices.



The three lines graphed in the xy -plane shown model the total cost y , in dollars, for x pounds of each of three different types of nuts, where $0 \leq x \leq 5$. Based on the models, which of the following statements must be true?

Select all that apply.

- Almonds cost more per pound than walnuts or cashews do.
- Walnuts cost \$9.00 per pound.
- Almonds cost \$5.00 per pound more than cashews do.
- Walnuts cost \$1.50 per pound more than cashews do.

Praxis Review - Form 3

#19

Answer the question below by clicking on the correct response.



If the pattern shown continues indefinitely, which of the following will be the 84th picture in the pattern?



Praxis Review - Form 3

#20

Answer the question below by clicking on the correct response.

A fair number cube has each face labeled with a different integer from 1 to 6. The cube is to be rolled two times. What is the probability that the outcome of each of the first and second rolls will be a 3?

$\frac{1}{3}$

$\frac{1}{6}$

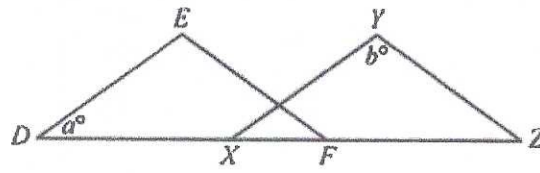
$\frac{1}{12}$

$\frac{1}{36}$

Praxis Review - Form 3

#21

Answer the question below by clicking on the correct response.



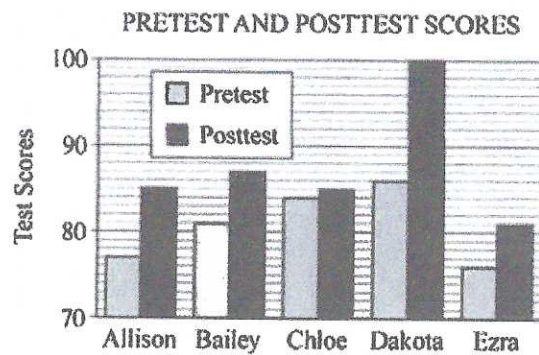
Isosceles triangle DEF is congruent to isosceles triangle XYZ , as shown in the figure. Based on the information given, which of the following is equivalent to b ?

- $90 + a$
- $180 - a$
- $180 - 2a$
- $2a$

Praxis Review - Form 3

#22

Click on your choices.



The double bar graph shows the pretest and posttest scores for five students. Which of the following is a correct interpretation of the data?

Select **all** that apply.

- Ezra's posttest-score increase was lower than Bailey's posttest-score increase.
- Dakota's posttest score was more than double Ezra's posttest score.
- The student with the median pretest score also had the median posttest score.
- Four students had a posttest-score increase of at least five points.

Praxis Review - Form 3

#23

Answer the question below by clicking on the correct response.

Maria works at a shoe store. She earns \$10 per hour plus an additional \$3 for each pair of shoes she sells. Which of the following expressions best represents the total amount of money Maria earns if she works x hours and sells y pairs of shoes?

- $30xy$
- $3x + 10y$
- $10x + 3y$
- $x + y + 13$

Praxis Review - Form 3

#24

Answer the question below by clicking on the correct response.

What is the x-intercept of the equation $2x + 3y + 24 = 0$?

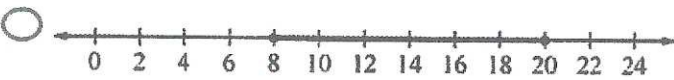
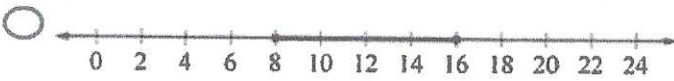
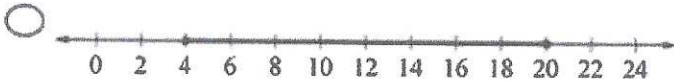
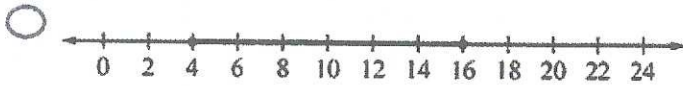
- 12
- 8
- 2
- 3

Praxis Review - Form 3

#25

Answer the question below by clicking on the correct response.

A tree is located 12 feet from the back door of a house, and a dog is tied to the tree with a leash that has a length of 8 feet. Which of the following number lines represents the distance that the dog can be from the back door of the house?



Praxis Review - Form 3

#26

Answer the question below by clicking on the correct response.

The vertices of triangle XYZ are located at the points $X(-3, -4)$, $Y(-1, 2)$, and $Z(5, -6)$ in the xy -plane. Which of the following points is the midpoint of \overline{YZ} ?

$(-2, -1)$

$(1, -5)$

$(2, -2)$

$(4, -4)$

Praxis Review - Form 3

#27

Click on your choices.

Which of the following points could be an intercept of the graph of a linear equation in the xy -plane?

Select **all** that apply.

$(-4, -5)$

$(0, 0)$

$(0, -5)$

$(1, 2)$

$(6, 0)$

Praxis Review - Form 3

#28

Answer the question below by clicking on the correct response.

A scale model of a backyard is 4 inches long and 2 inches wide. If the actual backyard is 12 feet wide, how many feet of chain link fencing is required to enclose the entire backyard?

- 36
- 48
- 72
- 96

Praxis Review - Form 3

#29

Answer the question below by clicking on the correct response.

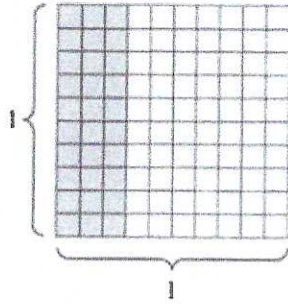
During basketball practice, Courtney made 84 of the first 100 free throws she attempted. If she missed the next 2 free throws she attempted, how many consecutive free throws would Courtney need to make to raise the percent of free throws she made to 88 percent?

- 6
- 34
- 48
- 92

Praxis Review - Form 3

#30

Click on your choices.



Which of the following values can be represented by the area model shown?

Select all that apply.

0.3%

3%

30%

$\frac{0.3}{10}$

$\frac{3}{10}$

$\frac{30}{10}$